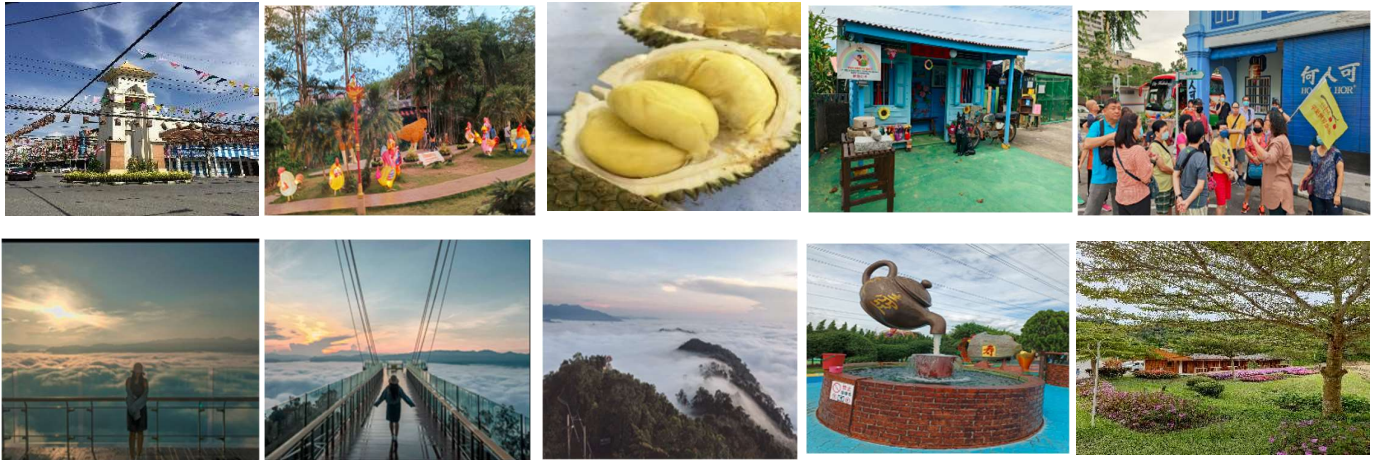


5 DAYS IPOH / SOUTHERN THAILAND FLOWER GARDEN / BETONG / KL TOUR



出发日期 DEPARTURE DATES : 22/8

20 人即可出发

第一天 新加坡~怡保 (早餐/午餐/ -)

早上集合于指定地点，准时出发，抵达马来西亚关口检查。早餐后，续程北上。傍晚，抵达怡保，带您到当地美食街享用晚餐（自费）。之后，入住酒店。

DAY 01 SINGAPORE / IPOH (BFAST/LUNCH/ -)

Morning assemble at your designated pickup point. After morning breakfast, proceed to Malaysia. In the evening, arrive Ipoh and brought to dinner at own expense.

第二天 怡保~ 勿洞 (早/午/晚餐)

早餐后，离开怡保。午餐后，停留温泉，然后前往参观全泰国最大的铜制释迦牟尼坐佛（14.4m）膜拜全泰南最规模雄伟的佛祖舍利子宝(39.9m). 前往了望台观看全勿洞的风景。于世界上最大的邮筒(10.3m)拍照留念。傍晚时分，下榻友谊村。

DAY 02 IPOH / BETONG (B / L / D)

After morning breakfast, assemble and proceed to visit Bentong – south Thailand. On the way, visit a hot spring, the largest bronze Vihara duta temple, 14.4m tall, also visit the largest letter box for photo taking. Check in Yuyi village.

第三天 勿洞 (早/午/晚)

早餐后，前往参观第一友谊村，游览神秘人工地道，实地了解历史，百闻不如一见。午餐于万花园餐厅，品尝无农药菜色及昔日之风味。餐后，参观万花园，让您置身于清风气爽之花丛中（全年温度 14-28 度）。晚上，享用中泰式晚餐。可自费享受泰式古方按摩，松松筋骨。

DAY 03 BETONG (B / L / D)

After morning breakfast, visit the Yuyi village, understand how the history of communist, how they survive in the jungle, Flower Garden is nice and low temperature. In the evening, stay in town hotel. You can go for massage on your own and walk along the streets, try the local durians if it is the season, normally during end August.



第四天 勿洞 / 吉隆坡 (早/午/晚)

早餐后，离开勿洞，前往吉隆坡。抵达后，参观茨厂街市场，鬼仔巷壁画。

DAY 04 BETONG / KL (B/L/D)

After morning breakfast, proceed to Kuala Lumpur with stopover in Ipoh. Upon arrival, visit Chinatown and Mural arts of KL.

第五天 吉隆坡/马六甲/永平/新加坡 (早/午/晚餐)

早餐后，离开酒店。前往马六甲 BABA CHARLIE 娘惹糕点屋，午餐享用娘惹餐，然后南下新加坡回返家园。

DAY 05 KL / MALACCA / YONG PENG / SINGAPORE (B / L / D)

After morning breakfast, proceed to Malacca Nonya kueh and Jonker street. After nonya lunch in Melaka, head south and return back to Singapore.

本社有权作任何行程之更动

旅费 TOUR FARE (至少 20 位) MINIMUM 20 PAXS

S\$538 每位，两人一房 Based on twin sharing per person

旅费包括 TOUR FARE INCLUDES :

来回乘搭豪华冷气旅游巴士 (30 位) Use of Malaysia 30 seater Aircon coach

一晚住宿怡保怡东酒店 或同级 1night at 3.5 Excelsior Hotel or Ipoh Downtown hotel or similar

一晚住宿于勿洞美仑酒店或文华或同级 1 night at Mandarin Betong or Grand View or similar

一晚住宿于万花园 1 night at White Flower Garden

一晚住宿于吉隆坡 4* 或 3* Element 酒店 1 night at 4* KL hotel or 3* Element Hotel KL

膳食全程提供: 5 个早餐, 5 个午餐, 4 晚餐。5breakfast, 5lunch, 4dinner.

友谊村与万花园门票 Entrance to Youyi Village & Flower garden.

走小玻璃桥与看云海如天气良好 mini bridge Walk & Viewing cloud if good weather.

导游讲解, 旅游保险及关口税 Overland Guide Service & local Betong guide, insurance and custom tax

团体旅游保险一万元与医药险五百元 Group travel accidental insurance S\$10,000 & medical \$500 (1-75yrs)

旅费包括司机与导游小费。 Fare includes also guide tipping

旅费不包括吃榴莲的费用。 FARE EXCLUDE DURIAN feast if during durian season.

Please note that durian season around August and is not included in the package.

榴莲餐不包括在内 (如榴莲季节在八月)

101 Upper Cross Street #B1-17T People's Park Centre Singapore 058357 Tel : 6532 0108 / 98531338 (whatsapp)